

Michael J. Allen, MRIBA, MRICS, ASCS, FASI, FCIQB, CEnv.  
 Architect and Chartered Building Surveyor  
 Iona House, Cannon Street, Kells, County Meath  
 t: 046-9240349 f: 046-9241638  
 e: mjha@eircom.net  
 w: allenarchitect.com



CLIENT

PROJECT

DRAWING TITLE

DESIGN/DRAWING

SCALE

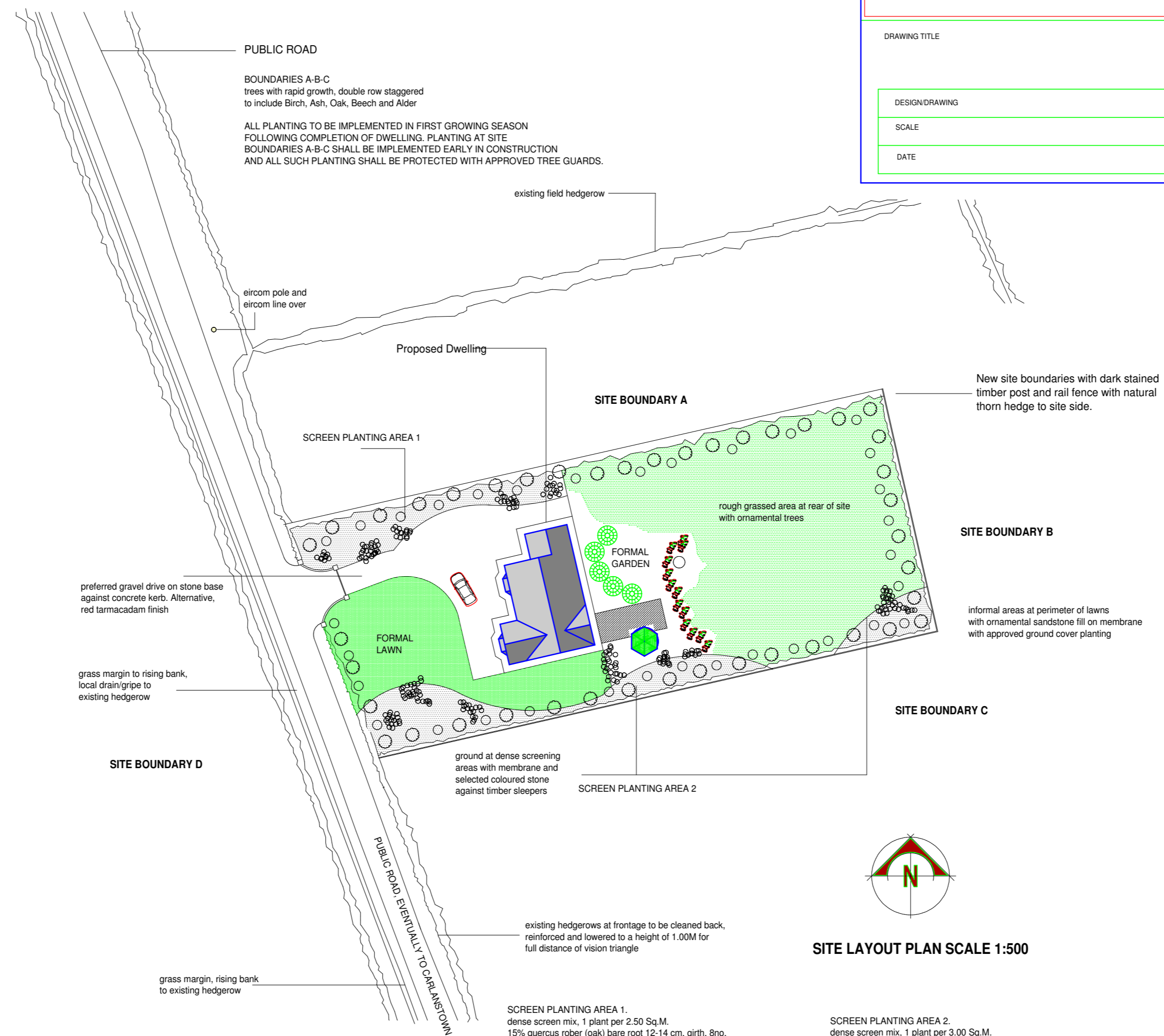
DATE

ALL BOUNDARIES, A-B-C-D.  
 Back plant timber post and rail fences with hedgerow as  
 single row at 300mm crs. 70% Crataegus monogyna (whitethorn)  
 20% Prunus Spinosa (blackthorn) 5% Rosas Canina (dog rose)  
 and 5% Ilex Aquifolium (holly). Similar treatment at existing hedgerow  
 to roadside, after first cleaning down and reinforcing existing bank  
 and hedgerow.

PUBLIC ROAD

BOUNDARIES A-B-C  
 trees with rapid growth, double row staggered  
 to include Birch, Ash, Oak, Beech and Alder

ALL PLANTING TO BE IMPLEMENTED IN FIRST GROWING SEASON  
 FOLLOWING COMPLETION OF DWELLING. PLANTING AT SITE  
 BOUNDARIES A-B-C SHALL BE IMPLEMENTED EARLY IN CONSTRUCTION  
 AND ALL SUCH PLANTING SHALL BE PROTECTED WITH APPROVED TREE GUARDS.

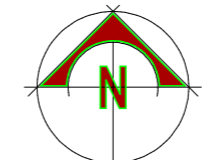


New site boundaries with dark stained  
 timber post and rail fence with natural  
 thorn hedge to site side.

SITE BOUNDARY B

informal areas at perimeter of lawns  
 with ornamental sandstone fill on membrane  
 with approved ground cover planting

SITE BOUNDARY C



SITE LAYOUT PLAN SCALE 1:500

SCREEN PLANTING AREA 1.  
 dense screen mix, 1 plant per 2.50 Sq.M.  
 15% quercus rober (oak) bare root 12-14 cm. girth, 8no.  
 10% fraxinus excelsior (ash) bare root 12-14cm girth, 5no.  
 25% betula pendula (birch) bare root 120-150 cm. high, 10no.  
 20% sorbus acuparia (rowan) bare root 120-150cm. high, 6no.  
 15% alnus incana (alder) bare root 120-150cm. high 4no.  
 10% corylus avellana (hazel) bare root 120-150cm. high, 4no.  
 5% ilex aquifolium (holly) container grown 2 litre pot 40-60cm. high 3no.

SCREEN PLANTING AREA 2.  
 dense screen mix, 1 plant per 3.00 Sq.M.  
 20% quercus rober (oak) bare root 12-14 cm. girth, 6no.  
 15% fraxinus excelsior (ash) bare root 12-14cm girth, 8no.  
 25% betula pendula (birch) bare root 120-150 cm. high, 20no.  
 15% alnus incana (alder) bare root 120-150cm. high 8no.  
 15% corylus avellana (hazel) bare root 120-150cm. high, 15no.  
 10% ilex aquifolium (holly) container grown 2 litre pot 40-60cm. high 4no.